



**Cisco Video Surveillance Stream Manager Video Recording / Storage
Administration Software
Quick Start, Installation and Operations Guide**

Corporate Headquarters
Cisco Systems, Inc.
170 West Tasman Drive
San Jose, CA 95134-1706
USA <http://www.cisco.com>
Tel: 408 526-4000
800 553-NETS (6387)
Fax: 408 526-4100

THE SPECIFICATIONS AND INFORMATION REGARDING THE PRODUCTS IN THIS MANUAL ARE SUBJECT TO CHANGE WITHOUT NOTICE. ALL STATEMENTS, INFORMATION, AND RECOMMENDATIONS IN THIS MANUAL ARE BELIEVED TO BE ACCURATE BUT ARE PRESENTED WITHOUT WARRANTY OF ANY KIND, EXPRESS OR IMPLIED. USERS MUST TAKE FULL RESPONSIBILITY FOR THEIR APPLICATION OF ANY PRODUCTS.

THE SOFTWARE LICENSE AND LIMITED WARRANTY FOR THE ACCOMPANYING PRODUCT ARE SET FORTH IN THE INFORMATION PACKET THAT SHIPPED WITH THE PRODUCT AND ARE INCORPORATED HEREIN BY THIS REFERENCE. IF YOU ARE UNABLE TO LOCATE THE SOFTWARE LICENSE OR LIMITED WARRANTY, CONTACT YOUR CISCO REPRESENTATIVE FOR A COPY.

NOTWITHSTANDING ANY OTHER WARRANTY HEREIN, ALL DOCUMENT FILES AND SOFTWARE OF THESE SUPPLIERS ARE PROVIDED "AS IS" WITH ALL FAULTS. CISCO DISCLAIMS ALL WARRANTIES, EXPRESSED OR IMPLIED, INCLUDING, WITHOUT LIMITATION, THOSE OF MERCHANTABILITY, FITNESS FOR A PARTICULAR PURPOSE AND NON-INFRINGEMENT OR ARISING FROM A COURSE OF DEALING, USAGE, OR TRADE PRACTICE.

IN NO EVENT SHALL CISCO OR ITS SUPPLIERS BE LIABLE FOR ANY INDIRECT, SPECIAL, CONSEQUENTIAL, OR INCIDENTAL DAMAGES, INCLUDING, WITHOUT LIMITATION, LOST PROFITS OR LOSS OR DAMAGE TO DATA ARISING OUT OF THE USE OR INABILITY TO USE THIS MANUAL, EVEN IF CISCO OR ITS SUPPLIERS HAVE BEEN ADVISED OF THE POSSIBILITY OF SUCH DAMAGES.

AccessPath, AtmDirector, Browse with Me, CCIP, CCSI, CD-PAC, CiscoLink, the Cisco Powered Network logo, Cisco Systems Networking Academy, the Cisco Systems Networking Academy logo, Cisco Unity, Fast Step, Follow Me Browsing, FormShare, FrameShare, IGX, Internet Quotient, IP/VC, iQ Breakthrough, iQ Expertise, iQ FastTrack, the iQ Logo, iQ Net Readiness Scorecard, MGX, the Networkers logo, ScriptBuilder, ScriptShare, SMARTnet, TransPath, Voice LAN, Wavelength Router, and WebViewer are trademarks of Cisco Systems, Inc.; Changing the Way We Work, Live, Play, and Learn, and Discover All That's Possible are service marks of Cisco Systems, Inc.; and Aironet, ASIST, BPX, Catalyst, CCDA, CCDP, CCIE, CCNA, CCNP, Cisco, the Cisco Certified Internetwork Expert logo, Cisco IOS, the Cisco IOS logo, Cisco Press, Cisco Systems, Cisco Systems Capital, the Cisco Systems logo, Empowering the Internet Generation, Enterprise/Solver, EtherChannel, EtherSwitch, FastHub, FastSwitch, GigaStack, IOS, IP/TV, LightStream, MICA, Network Registrar, Packet, PIX, Post-Routing, Pre-Routing, RateMUX, Registrar, SlideCast, StrataView Plus, Stratm, SwitchProbe, TeleRouter, and VCO are registered trademarks of Cisco Systems, Inc. and/or its affiliates in the U.S. and certain other countries.

Windows®, XP®, DirectPlay® and DirectDraw® are registered trademarks of Microsoft Corporation. Intel® and Pentium® are registered trademarks of Intel Corporation. Trademarked names are used throughout this manual. Rather than place a symbol at each occurrence, trademarked names are designated with initial capitalization. Inclusion or exclusion is not a judgment on the validity or legal status of the term.

All other trademarks mentioned in this document or Web site are the property of their respective owners. The use of the word partner does not imply a partnership relationship between Cisco and any other company. (0110R)

Cisco Video Surveillance Video Recording / Storage Administration Software Guide
Copyright © 2006-2007, Cisco Systems, Inc. All rights reserved.



Introduction.....	1
ABOUT THIS GUIDE	1
FEATURES	1
MINIMUM SYSTEM REQUIREMENTS	1
NETWORK CONFIGURATION.....	1
 Software Installation.....	 2
 Using Stream Manager Video Recording / Storage Administration	 3
INITIAL STARTUP	3
KEY ELEMENTS OF STARTUP SCREEN (Figure 1).....	3
KEY ADMINISTRATOR ACTIVITIES	4
ADDITIONAL MONITORING SOFTWARE.....	4

Section

1

INTRODUCTION

ABOUT THIS GUIDE

Thank you for purchasing a Cisco Systems software product. This guide is designed to provide you with the necessary information to install and use the software.

FEATURES

Real-time monitoring and reporting of all Cisco Systems video surveillance devices – provides system overview and detail device statistics for all connected devices.

Intuitive data presentation – showing all key device statistics, including storage capacity, recording rate, Camera ID, configuration history, and event log.

Using “Ticket Logs,” the system provides a detailed status report and history of all events and actions taken against the events.

Ticket log administration – provides easy administration of pending issues and historical reporting of resolved issues.

Equipment and peripheral search function – allows administrator to conduct a search for any camera in order to display associated encoding device.

Time Synchronization – All connected equipment can be time sync'd with third party equipment.

Automatic failover of camera inputs in the event of an encoder failure.

Video export function – allows users to export example of video directly from Stream Manager Video Recording / Storage Administration application.

MINIMUM SYSTEM REQUIREMENTS

Computer	1.5 Ghz (2.3 Ghz recommended)
Operating System	Windows XP Pro
RAM MB	512 MB (1024 MB recommended)
Hard Drive (free space)	20 MB
Other Drive	CD ROM for initial installation
Network Card	10/100T operation
Other	Mouse or other pointing device

NETWORK CONFIGURATION

Data sent across a network is limited by bus speed, network traffic, network topology and packet size. Minimum 100BaseT is recommended. Use the following guidelines when configuring your network:

Use the proper cables and connectors: CAT 5 for 100Base-TX (100Mbps) operation.

Configure the network for the TCP/IP Protocol.

If the network supporting the Cisco Systems Video Surveillance System does not have a DHCP server, you must manually assign an IP address to the PC running Stream Manager Video Recording / Storage Administration. Consult your network administrator for assistance.

Section

2

SOFTWARE INSTALLATION

1. Close any running programs.
2. Insert the Stream Manager Video Recording / Storage Administration CD in the CD-ROM drive. The installation program should autorun. If it does not, **Explore** the CD and double-click the **Stream Manager Video Recording / Storage Administration Setup** (aka Clearmonitor) icon.
3. When the Stream Manager Video Recording / Storage Administration Setup screen appears, click **Next** to display the copyright notice.
4. Select **Next** to display the Choose Destination Location screen. This screen shows the recommended directory for the software.
5. Select **Next** to confirm your intention to install the Stream Manager Video Recording / Storage Administration software.
6. Select **Close** when installation completes.



NOTE: Please visit us at www.cisco.com to register your product and become eligible for various support services and product information updates!

Section

3

USING STREAM MANAGER VIDEO RECORDING / STORAGE ADMINISTRATION

Note – Before starting up Stream Manager Video Recording / Storage Administration , all Cisco Systems video surveillance devices should be connected to the network and configured for normal operation.

INITIAL STARTUP

To start the Stream Manager Video Recording / Storage Administration software, do one of the following:

Double-click the **Stream Manager Video Recording / Storage Administration** icon on your desktop;

Or

Click the **Start** button, then click **Programs**, then click the **Stream Manager Video Recording / Storage Administration** icon.

When the Stream Manager Video Recording / Storage Administration application starts, the software searches for all connected Cisco Systems devices for display on the Startup Screen.

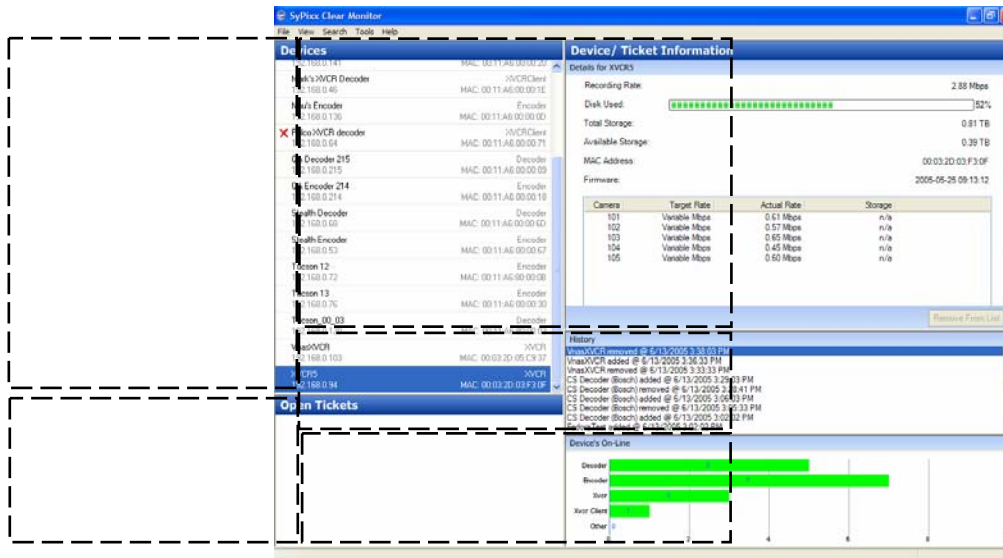


FIGURE 1
Startup Screen

KEY ELEMENTS OF STARTUP SCREEN (Figure 1)

The Startup Screen polls all connected devices and provides an overview of the entire system. A description of each of the sections of the Startup Screen is detailed below.

Device Tree

The top-left screen shows a listing of all device types. Select a device to query and display a listing of all such devices in the **Information Window**.

To ensure all devices are shown in the **Device Tree**, refresh the screen by selecting **View/Refresh**.

Devices can be sorted by Name or IP Address. Right Click in the Device Tree to select sort order.

Open Tickets Window

The lower-left side of the screen shows a listing of Open Tickets. Select an open ticket to review the status and history of any open repair ticket in the **Information Window**.

Open Tickets can be sorted by Name or IP Address. Right Click in the Device Tree to select sort order.

Device/Ticket Information

The top-right screen displays detailed information of the selected device or ticket. The information displayed is dynamic and dependent on the item selected.

Device History

A listing of all activities for each device can be seen by selecting **History List** in the **View** menu. The History List is displayed below the Information Window.

Devices On-Line

A graphic of all devices, grouped by device type can be seen by selecting **Devices On-Line Chart** from the **View** menu. The graphic is displayed below the Information Window.

Ticket History Window

A history tickets can be displayed by selecting **Ticket Log** from the **View** menu. This window displays a history of pending tickets. Sort the data by Date, Description or Device by **Right-Clicking** on the **Ticket Log** window (Figure 2).

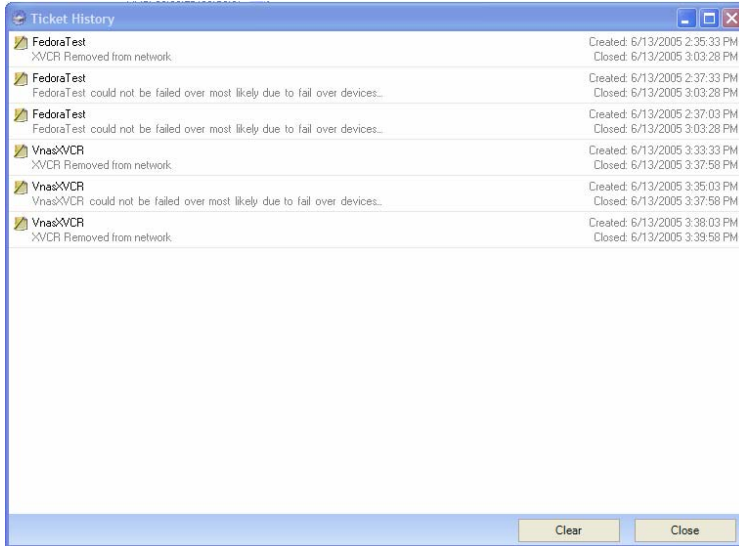


FIGURE 2
Ticket Log

KEY ADMINISTRATOR ACTIVITIES

The following topics describe how to use Stream Manager Video Recording / Storage Administration to perform common maintenance and monitoring activities.

Establishing a Failover recorder

To enable failover recording, one Integrated Services Platform (aka X-VCR) unit must be configured to serve as a Failover Recorder as follows:

Connect selected Matrix Switch outputs to the Failover Integrated Services Platform (aka X-VCR) Inputs.

Using ClearConfig, Select **Failover** Mode in the Integrated Services Platform (aka X-VCR) General Properties (See Fig 3)



FIGURE 3

Stream Manager Config – Failover Mode

Assign Matrix Switch Outputs for Failover Integrated Services Platform (aka X-VCR) inputs by clicking on each video input and adjusting the settings, (See Figure 4)

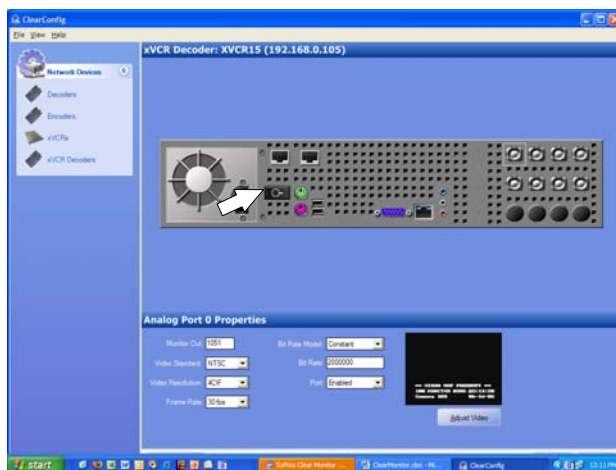


FIGURE 4

ClearConfig – Assign Monitor Outputs to Integrated Services Platform (aka X-VCR) Input

Select update to save Failover Integrated Services Platform (aka X-VCR) settings.

Monitoring the System

Launch Stream Manager Video Recording / Storage Administration to begin the monitoring process.

Stream Manager Video Recording / Storage Administration will display an overview of the system and provide valuable operating statistics.

In the event of an event or problem the following notifications will be generated by Stream Manager Video Recording / Storage Administration :

- Audible warning
- Visual display

The event will be displayed in the Ticket log, with detailed information shown in the Ticket Information Window.

Managing a System Event

Stream Manager Video Recording / Storage Administration is setup to automatically failover the recording of cameras connected a device which becomes inoperable. Therefore, the recording of video will not be interrupted.

In order to ensure uninterrupted recording, action should be taken to identify and resolve the problem with the device in question.

Following are general procedures for managing a system event:

Read Problem Ticket and detailed information to identify the device and problem.

Ensure that the system properly routed the video over to the Failover INTEGRATED SERVICES PLATFORM (AKA X-VCR).

Note, if the number of failed cameras exceeds the Failover XVCR capacity, it may be necessary to prioritize which cameras are being recorded on the Failover INTEGRATED SERVICES PLATFORM (AKA X-VCR). To do this, manually switch cameras inputs to Failover Outputs using the matrix switch.

Sort the ticket log by device and description to identify possible trends associated with the device.

If you encounter difficulties or have any questions, please contact your Cisco reseller or Cisco Systems technical support based on your warranty or services contract status.

Fail back to original Integrated Services Platform (aka X-VCR)

After troubleshooting and repair of the initial problem, simply select the failover ticket and select **Fail back**. This step will reassign the cameras to be recorded on the original Integrated Services Platform (aka X-VCR).

REVISION HISTORY:

Manual Number	Date	Comment
Stream Manager Storage Administration rev-.inst	6/15/06	Original

