



Limitations

When calling from Mitel digital phone to Cisco 7960 IP phone, IP phone displays Calling Name and Number after the call is answered. Mitel phone however displays Trunk Name. It was verified using ISDN protocol analyzer that the CallManager PRI trunk does not support sending Connected Name or Connected Number information in the connect message back to PBX.

When calling from Cisco 7960 IP phone to Mitel digital phone, Mitel phone displays Calling Name and Number after the call is answered. IP phone displays Called Number. It was verified using ISDN protocol analyzer that the Mitel PRI trunk does not support sending Connected Name or Connected Number information in the connect message back to CallManager.

Mitel PRI trunk does not support sending Calling Number when configured as USER side.

System Components

Hardware Requirements

Cisco Catalyst 6000 Series Switch with T1 PRI DMS-100

Mitel 3300 ICP

Cisco Unified CallManager

Software Requirements

Cisco Unified CallManager, Release 4.0

PBX Software: 3.3

Features

Key Features Supported

Calling Number

Calling Name

Key Features not Supported

Connected Number

Connected Name

Configuration

Configuration Sequence and Tasks

1. System Hardware Modules
2. System Software Version
3. PRI Trunk Configuration
4. Link Descriptor Assignment
5. MSDN-DPNSS-DASSII Trunk Circuit Descriptor
6. Digital Trunk Assignment
7. Trunk Service Assignment
8. Digit Modification Assignment
9. Route Assignment
10. ARS Digits Dialing Plan

Configuration Menus and Commands

Configuring the Mitel 3300 ICP Release 3.3 PBX



System Hardware Modules

MitelNetworks@3300 Integrated Communications Platform (ICP) - Microsoft Internet Explorer

File Edit View Favorites Tools Help

Alarm Status: Major 2004-Feb-19 14:27:34 Data Refresh Help Exit

System Message:

Selection:

Maintenance and Diagnostics

- Maintenance and Diagnostics
 - Alarm Details
 - Maintenance Commands
 - All
 - Logs
 - System Hardware Profile
 - System Hardware Modules**
 - System Hardware Compute Co
 - IP Telephones
 - Backup
 - Restore

Slot Number	Module ID, Driver ID	Variant ID	Card Description
1	12,1	n/a	Dual FIM - Multimode 820nm
2	12,1	n/a	Dual FIM - Multimode 820nm
3	--	--	--
4	--	--	--
5	22,1	n/a	Echo Cancellation 64 Channels
6	--	--	--
7	--	--	--
8	47,6	n/a	SHARC Enhanced DSP - 4 circuit

System Hardware Modules

Slot Number: 1
Module ID, Driver ID: 12,1
Minimum Reset Timing: 0
Card Description: Dual FIM - Multimode 820nm
PCB Assembly: 56001801
PCB Revision Level: RC
Processor Type: n/a
Processor Speed (Core, Clock): 0, 0
MAC Address: 00:00:00:00:00:00
Country Code: NA

start | 2 Procom Plus Con... | 4 Internet Explorer | Eudora - [In] | 2:03 PM



System Software Version

Alarm Status: Major 2004-Feb-19 14:27:34

System Message:

Selection:

- Maintenance and Diagnostics
 - Alarm Details
 - Maintenance Commands
 - All
 - Logs
 - System Hardware Profile
 - System Hardware Modules
 - System Hardware Compute Cards
 - IP Telephones
 - Backup
 - Restore

Slot ID	PCB Assembly and Rev Level	IP Address
1	143890303 R1.2	172.20.12.254
2	143890303 R1.2	172.20.12.253

System Hardware Compute Cards

Slot ID: 1
PCB Assembly and Rev Level: 143890303 R1.2
Core Speed: 297000000
Bus Speed: 66000000
Memory Size: 268435456
MAC Address: 08:00:0f:0f:3e:95
IP Address: 172.20.12.254
BOOTROM Rev: 1.2(3 Jul 23 2002
Post Rev: 2.7 07/06/2002
Main Version: 3.3.10.1

1.



PRI Trunk Configuration

Site Options

```

-----
Connected Platform:      SX-2000 Light
PLATFORM:               PRI Card
Options:: CLIP / CLIR / Data / CBC / DDI /
Created with IMAT Version "7.2.0.3"
Database Version  "DB08.00.00"

```

Link Mapping

```

=====

```

PBX Link*	MVIP Link	PRI Card	Card Variant	PRI link #	PRI logical #	Physical Type
1	4	1	Dual link card	1	1	T1/DSX1
2	5	1	Dual link card	2	2	T1/DSX1

```

=====

```

PRI Link Characteristics

```

-----

```

PRI logical#	Protocol Type	Protocol Variant	Test Call Number	Physical Characteristics
1	DMS-100			Invert D Channel: Off Network Side Interface: On Enbloc-only: Off Line Coding=B8ZS Framing=ESF Line Build Out=0-133 feet Invert Data=Disable Comment ""
2	DMS-100			Invert D Channel: Off Network Side Interface: Off Enbloc-only: Off Line Coding=B8ZS Framing=ESF Line Build Out=0-133 feet Invert Data=Disable Comment ""

```

=====

```

Trunk Data

Incoming Call Characteristics



PBX link#	Trunks*	DDI Delivery	CPN Delivery
1	01	Yes	Yes
1	02	Yes	Yes
1	03	Yes	Yes
1	04	Yes	Yes
1	05	Yes	Yes
1	06	Yes	Yes
1	07	Yes	Yes
1	08	Yes	Yes
1	09	Yes	Yes
1	10	Yes	Yes
1	11	Yes	Yes
1	12	Yes	Yes
1	13	Yes	Yes
1	14	Yes	Yes
1	15	Yes	Yes
1	16	Yes	Yes
1	17	Yes	Yes
1	18	Yes	Yes
1	19	Yes	Yes
1	20	Yes	Yes
1	21	Yes	Yes
1	22	Yes	Yes
1	23	Yes	Yes
2	01	Yes	Yes
2	02	Yes	Yes
2	03	Yes	Yes
2	04	Yes	Yes
2	05	Yes	Yes
2	06	Yes	Yes
2	07	Yes	Yes
2	08	Yes	Yes
2	09	Yes	Yes
2	10	Yes	Yes
2	11	Yes	Yes
2	12	Yes	Yes
2	13	Yes	Yes
2	14	Yes	Yes
2	15	Yes	Yes
2	16	Yes	Yes
2	17	Yes	Yes
2	18	Yes	Yes
2	19	Yes	Yes
2	20	Yes	Yes
2	21	Yes	Yes
2	22	Yes	Yes
2	23	Yes	Yes

CPN Substitutions Setup



=====

Outgoing Call Characteristics

PBX

link#

Trunks*

1	01-23	Fixed Bearer Capability: Voice Speech, Data Null Fixed Network Specific Facilities: Default (len=0) Network: NI-2 Fixed CLIR: Voice Allow, Data Allow Per Call Network Specific Facilities: call by call on per call: No Network: NI-2 0: Unassigned (len=0) 1: Unassigned (len=0) 2: Unassigned (len=0) 3: Unassigned (len=0) 4: Unassigned (len=0) 5: Unassigned (len=0) 6: Unassigned (len=0) 7: Unassigned (len=0) 8: Unassigned (len=0) CPN Value: Voice Default CPN: CPN Substitutions: Data Default CPN: CPN Substitutions:
2	01-23	Fixed Bearer Capability: Voice Speech, Data Null Fixed Network Specific Facilities: Default (len=0) Network: NI-2 Fixed CLIR: Voice Allow, Data Allow Per Call Network Specific Facilities: call by call on per call: No Network: NI-2 0: Unassigned (len=0) 1: Unassigned (len=0) 2: Unassigned (len=0) 3: Unassigned (len=0) 4: Unassigned (len=0) 5: Unassigned (len=0) 6: Unassigned (len=0) 7: Unassigned (len=0) 8: Unassigned (len=0) CPN Value: Voice Default CPN: CPN Substitutions: Data Default CPN:



CPN Substitutions:

=====

PBX Trunk Range Assignments

TRA Id	Starting Link Trunk	Ending Link Trunk	AssocTRLs	TRA Description	Protocol
--------	---------------------	-------------------	-----------	-----------------	----------

=====

Min/Max Limits Definitions

TRL Id	AssocSGLs	AssocISLs /RejCause	Counts Min Max	CxC Service /Param	Protocol/ Description
--------	-----------	---------------------	----------------	--------------------	-----------------------



Link Descriptor Assignment

Mitel Networks® 3300 Integrated Communications Platform (ICP) - Microsoft Internet Explorer

File Edit View Favorites Tools Help

Alarm Status: Major 2004-Feb-19 14:27:34 Data Refresh Help Exit

System Message:

Selection:

System Configuration

- System Configuration
- System Capacity
- Units/Modules
- Trunks
 - Class of Service Options Assign
 - Analog Trunks
 - Digital Trunks
 - DPNSS
 - Link Descriptor Assignment**
 - Digital Link Assignment
 - MSDN-DPNSS-DASSII Tr
 - Trunk Service Assignmer
 - Digital Trunk Assignment
 - Network Synchronization
- E1/CEPT
- T1/D4
- IP Networking/NET
- Direct Trunk Select
- Automatic Route Selection (AR)

- Devices
- Music On Hold
- Loudspeaker Paging
- Telephone Paging
- System Output Ports

Add Change Delete

Previous Page 1 of 1 Next Go to: value: Go

Number	Address for Message Control	BER - Maintenance Limit, 10 ^{ms} -n	BER - Service Limit, 10 ^{ms} -n	Data Call Alternate Digit Inversion
1	B	4	3	Yes
3	B	6	6	Yes
4		5	3	Yes
10	B	6	6	Yes
12	B	5	5	Yes
13	B	4	3	Yes
14	A	5	4	Yes

Link Descriptor Assignment

Number: 1
Address for Message Control: B
BER - Maintenance Limit, 10^{ms}-n: 4
BER - Service Limit, 10^{ms}-n: 3
Data Call Alternate Digit Inversion: Yes
Framing Losses in 24 hrs - Maintenance Limit: 255
Framing Losses in 24 hrs - Service Limit: 9000
Integrated Digital Access: ISDN NODE
Satellite Link Delay: NO
Slip Rate - Maintenance Limit: 255

start 2 Proconm Plus Con... 3 Internet Explorer Eudora - [In] 1:55 PM



MSDN-DPNSS-DASSII Trunk Circuit Descriptor

Mitel Networks® 3300 Integrated Communications Platform (ICP) - Microsoft Internet Explorer

File Edit View Favorites Tools Help

Alarm Status: Major 2004-Feb-19 14:27:34 Data Refresh Help Exit

System Message:

Selection:

System Configuration

- System Configuration
- System Capacity
- Units/Modules
- Trunks
 - Class of Service Options Assignm
 - Analog Trunks
 - Digital Trunks
 - DPNSS
 - Link Descriptor Assignm
 - Digital Link Assignment
 - MSDN-DPNSS-DASSII Tr
 - Trunk Service Assignmer
 - Digital Trunk Assignment
 - Network Synchronization
 - E1/CEPT
 - T1/D4
 - IP Networking/NET
 - Direct Trunk Select
 - Automatic Route Selection (AR
- Devices
- Music On Hold
- Loudspeaker Paging
- Telephone Paging
- System Output Ports

Add Change Delete

Previous Page 1 of 1 Next Go to: value: Go

MSDN-DPNSS-DASSII Trunk Circuit Descriptor

Number	Card Type	Dual Seizure Priority	Far End Connection	Signalling Protocol	ISDN BRI Mode
13	UNIVERSAL E1	Incoming	Main PBX	MSDN-DPNSS	
25	CEPT	Incoming	Local Office	MSDN-DPNSS	
26	UNIVERSAL E1	Incoming	Main PBX	MSDN-DPNSS	
27	UNIVERSAL E1	Incoming	Local Office	MSDN-DPNSS	
28	UNIVERSAL T1	Incoming	Local Office	MSDN-DPNSS	
30	UNIVERSAL T1	Incoming	Toll Office	MSDN-DPNSS	

start 2 Procomm Plus Con... 3 Internet Explorer Eudora - [In] 1:59 PM



Digital Trunk Assignment

Mitel Networks® 3300 Integrated Communications Platform (ICP) - Microsoft Internet Explorer

File Edit View Favorites Tools Help

Alarm Status: Major 2004-Feb-19 14:27:34 Data Refresh Help Exit

System Message:

Selection:

System Configuration

- System Configuration
- System Capacity
- Units/Modules
- Trunks
 - Class of Service Options Assignm
 - Analog Trunks
 - Digital Trunks
 - DPNSS
 - Link Descriptor Assignm
 - Digital Link Assignment
 - MSDN-DPNSS-DASSII Tr
 - Trunk Service Assignmer
 - Digital Trunk Assignment
 - Network Synchronization
 - E1/CEPT
 - T1/D4
 - IP Networking/ANET
 - Direct Trunk Select
 - Automatic Route Selection (AR)
- Devices
- Music On Hold
- Loudspeaker Paging
- Telephone Paging
- System Output Ports

Change Clear

Previous Page 7 of 11 Next Go to: value: Go

Cabinet	Shelf	Slot	Circuit	Card Type	Trunk Number
8	1	1	1	UNIVERSAL T1	801
8	1	1	2	UNIVERSAL T1	802
8	1	1	3	UNIVERSAL T1	803
8	1	1	4	UNIVERSAL T1	804
8	1	1	5	UNIVERSAL T1	805
8	1	1	6	UNIVERSAL T1	806
8	1	1	7	UNIVERSAL T1	807
8	1	1	8	UNIVERSAL T1	808
8	1	1	9	UNIVERSAL T1	809
8	1	1	10	UNIVERSAL T1	810

Digital Trunk Assignment

Cabinet: 8
Shelf: 1
Slot: 1
Circuit: 1
Card Type: UNIVERSAL T1
Trunk Number: 801
Trunk Service Number: 12
DTS Service Number:
Circuit Descriptor Number: 28
Interconnect Number: 1

start 2 Procomm Plus Con... 3 Internet Explorer Eudora - [In] 1:58 PM



Trunk Service Assignment

Mitel Networks@ 3300 Integrated Communications Platform (ICP) - Microsoft Internet Explorer

File Edit View Favorites Tools Help

Alarm Status: Major 2004-Feb-19 14:27:34 Data Refresh Help Exit

System Message:

Selection:

System Administration

- System Administration
- User Authorization Profiles
- System Options
- Automatic Route Selection (AR)
- Trunk Service Assignment**
- Trunk Group Assignment
- Class of Restriction Group A
- System Account Code Defin
- Independent Account Code
- Default Account Code Defini
- Call Progress Tone Detectio
- Digit Modification Assignme
- Maximum Dialed Digits
- Route Assignment
- Route List Assignment (Opt
- Day and Time Zone Assignr
- Route Plan Assignment (Op
- ARS Digits Dialed Assignm
- ARS Leading Digits Assignr
- Interconnect Restriction
- Node Identity Assignment
- Automatic Call Distribution (AC
- Call Handling
- Telephone Management
- Telephone Directory Managerr
- Property Management System

Change Clear

Previous Page 1 of 15 Next Go to: value: Go

Trunk Service Number	Release Link Trunk	Class of Service	Class of Restriction	Baud Rate	Intercept Number	Trunk Label
1	NO	11	1	300	1	
2	NO	12	1	300	1	
3	NO	13	1	300	1	
4	NO	1	1	300	1	
5	NO	1	12	300	1	
6	NO	1	1	300	1	
7	NO	1	1	300	1	
8	NO	1	1	300	1	
9	NO	1	1	300	1	
10	NO	1	1	300	1	

Trunk Service Assignment

Trunk Service Number: 1
Release Link Trunk: NO
Class of Service: 11
Class of Restriction: 1
Baud Rate: 300
Intercept Number: 1
Non-dial In Trunks Answer Point - Day: 500
Non-dial In Trunks Answer Point - Night 1: 500
Non-dial In Trunks Answer Point - Night 2: 500
Dial In Trunks Incoming Digit Modification - Absorb:

start Procorm Plus Con... 3 Internet Explorer Eudora - [In] 1:52 PM



Mitel Networks@ 3300 Integrated Communications Platform (ICP) - Microsoft Internet Explorer

File Edit View Favorites Tools Help

Alarm Status: Major 2004-Feb-20 12:02:30 Data Refresh Help Exit

System Message:

Selection:

System Administration

- System Administration
 - User Authorization Profiles
 - System Options
 - Automatic Route Selection (ARS)
 - Trunk Service Assignment
 - Trunk Group Assignment
 - Class of Restriction Group Assignment
 - System Account Code Definition
 - Independent Account Code
 - Default Account Code Definition
 - Call Progress Tone Detection
 - Digit Modification Assignment
 - Maximum Dialed Digits
 - Route Assignment
 - Route List Assignment (Optional)
 - Day and Time Zone Assignment
 - Route Plan Assignment (Optional)
 - ARS Digits Dialed Assignment
 - ARS Leading Digits Assignment
 - Interconnect Restriction
 - Node Identity Assignment
 - Automatic Call Distribution (ACD)
 - Call Handling
 - Telephone Management
 - Telephone Directory Management
 - Property Management System

Change Clear

Previous Page 2 of 14 Next Go to: value: Go

Trunk Service Number	Release Link Trunk	Class of Service	Class of Restriction	Baud Rate	Intercept Number	Trunk Label
11	ND	1	1	300	1	
12	ND	1	1	300	1	
13	ND	1	1	300	1	
14	ND	1	1	300	1	
15	ND	1	1	300	1	
16	ND	1	1	300	1	
17	ND	1	1	300	1	
18	ND	1	1	300	1	
19	ND	1	1	300	1	
20	ND	1	1	300	1	

Trunk Service Assignment

Trunk Service Number: 12
Release Link Trunk: ND
Class of Service: 1
Class of Restriction: 1
Baud Rate: 300
Intercept Number: 1
Non-dial In Trunks Answer Point - Day:
Non-dial In Trunks Answer Point - Night 1:
Non-dial In Trunks Answer Point - Night 2:
Dial In Trunks Incoming Digit Modification - Absorb: 0

start Internet Ex... C:\3300BU Procorm Plus ... Eudora - [sobá... 11:57 AM



Digit Modification Assignment

Mitel Networks® 3300 Integrated Communications Platform (ICP) - Microsoft Internet Explorer

File Edit View Favorites Tools Help

Alarm Status: Major 2004-Feb-19 14:27:34 Data Refresh Help Exit

System Message:

Selection:

System Administration Change Clear

- System Administration
- User Authorization Profiles
- System Options
- Automatic Route Selection (ARS)
 - Trunk Service Assignment
 - Trunk Group Assignment
 - Class of Restriction Group Assignment
 - System Account Code Definition
 - Independent Account Code
 - Default Account Code Definition
 - Call Progress Tone Detection
 - Digit Modification Assignment**
 - Maximum Dialed Digits
 - Route Assignment
 - Route List Assignment (Optional)
 - Day and Time Zone Assignment
 - Route Plan Assignment (Optional)
 - ARS Digits Dialed Assignment
 - ARS Leading Digits Assignment
 - Interconnect Restriction
 - Node Identity Assignment
- Automatic Call Distribution (ACD)
- Call Handling
- Telephone Management
- Telephone Directory Management
- Property Management System

Previous Page 1 of 3 Next Go to: value: Go

Digit Modification Number	Number of Digits to Absorb	Digits to be Inserted	Final Tone Plan/Information Marker
1	1		
2	2		
3	0		
4	3		
5	0		
6	0		
7	0		
8	0		
9	0		
10	0		
11	0		
12	0		
13	0		
14	0		
15	0		
16	0		
17	0		
18	0		
19	0		

start 2 Proconn Plus Con... 3 Internet Explorer Eudora - [In] 1:53 PM



Route Assignment

Mitel Networks® 3300 Integrated Communications Platform (ICP) - Microsoft Internet Explorer

File Edit View Favorites Tools Help

Alarm Status: Major 2004-Feb-19 14:27:34 Data Refresh Help Exit

System Message:

Selection:

System Administration

- System Administration
 - User Authorization Profiles
 - System Options
 - Automatic Route Selection (ARS)
 - Trunk Service Assignment
 - Trunk Group Assignment
 - Class of Restriction Group Assignment
 - System Account Code Definition
 - Independent Account Code
 - Default Account Code Definition
 - Call Progress Tone Detection
 - Digit Modification Assignment
 - Maximum Dialed Digits
 - Route Assignment
 - Route List Assignment (Optional)
 - Day and Time Zone Assignment
 - Route Plan Assignment (Optional)
 - ARS Digits Dialed Assignment
 - ARS Leading Digits Assignment
 - Interconnect Restriction
 - Node Identity Assignment
 - Automatic Call Distribution (ACD)
 - Call Handling
 - Telephone Management
 - Telephone Directory Manager
 - Property Management System

Change Clear

Previous Page 1 of 8 Next Go to: value: Go

Route Assignment

Route Number	Trunk Group Number	COR Group Number	Digit Modification Number	Digits Before Outpulsing	XNET Trunk Group Number	Route Type	Compression
1	1	1	1				Off
2	2	1	5				Off
3	3	1	3				Off
4		1	1				Off
5		1	1				Off
6		1	1				Off
7		1	1				Off
8		1	1				Off
9		1	1				Off
10		1	1				Off
11		1	1				Off
12	12	1	5				Off
13	13	1	4				Off
14	14	1	2				Off
15		1	1				Off
16		1	1				Off
17		1	1				Off
18		1	1				Off

start | 2 Proconm Plus Con... | 3 Internet Explorer | Eudora - [In] | 1:51 PM



ARS Digits Dialing Plan

Mitel Networks@ 3300 Integrated Communications Platform (ICP) - Microsoft Internet Explorer

File Edit View Favorites Tools Help

Alarm Status: Major 2004-Feb-20 12:02:30 Data Refresh Help Exit

System Message: New record successfully added.

Selection:

System Administration

- System Administration
- User Authorization Profiles
- System Options
- Automatic Route Selection (ARS)
 - Trunk Service Assignment
 - Trunk Group Assignment
 - Class of Restriction Group Assignment
 - System Account Code Definition
 - Independent Account Code
 - Default Account Code Definition
 - Call Progress Tone Detection
 - Digit Modification Assignment
 - Maximum Dialed Digits
 - Route Assignment
 - Route List Assignment (Optional)
 - Day and Time Zone Assignment
 - Route Plan Assignment (Optional)
 - ARS Digits Dialed Assignment**
 - ARS Leading Digits Assignment
- Interconnect Restriction
- Node Identity Assignment
- Automatic Call Distribution (ACD)
- Call Handling
- Telephone Management
- Telephone Directory Management
- Property Management System

Add Change Delete

Previous Page 1 of 1 Next Go to: value: Go

ARS Digits Dialed Assignment

Digits Dialed	Number of Digits to Follow	Termination Type	Termination Number
100	1	Route	13
40	2	Route	2
49	2	Route	12
666	4	Route	13
7	Unknown	Route	1
80	Unknown	Route	2
90	Unknown	Route	3
91	Unknown	Route	13
950484	4	Route	3
650364	4	Route	12
527	4	Route	2

start | 4 Internet Explorer | C:\3300BU | Procomm Plus Telnet | 11:53 AM



Configuring Cisco Unified CallManager

6608-T1 Gateway Configuration

Cisco CallManager Administration
For Cisco IP Telephony Solutions

Gateway Configuration

[Back to Find/List Gateways](#)
[Dependency Records](#)

Product : Cisco Catalyst 6000 T1 VoIP Gateway
Gateway : S0/DS1-0@SDA0001C9D93A98
Device Protocol: Digital Access PRI
Registration: Registered with Cisco CallManager 172.20.32.254
IP Address: [172.20.32.112](#)

Status: Update completed.

Device Information

MAC Address*	<input type="text" value="0001C9D93A98"/>
Description	<input type="text" value="SDA0001C9D93A98"/>
Device Pool*	<input type="text" value="Default"/>
Network Locale	<input type="text" value="United States"/>
Media Resource Group List	<input type="text" value="< None >"/>
Location	<input type="text" value="< None >"/>
AAR Group	<input type="text" value="< None >"/>
Load Information	<input type="text"/>

Multilevel Precedence and Preemption (MLPP) Information

MLPP Domain (e.g., "0000FF")	<input type="text"/>
MLPP Indication	<input type="text" value="Off"/>
MLPP Preemption	<input type="text" value="Disabled"/>

Interface Information

PRI Protocol Type*	<input type="text" value="PRI DMS-100"/>
Protocol Side*	<input type="text" value="User"/>
Channel Selection Order*	<input type="text" value="Top Down"/>
Channel IE Type*	<input type="text" value="Timeslot Number"/>

Reset succeeded.

Local intranet



Cisco CallManager 4.0 Administration - Gateway Configuration - Microsoft Internet Explorer

File Edit View Favorites Tools Help

Address <http://cm-kingon/CCMAdmin/gatewayconfig.asp?pkid={DF71136E-4975-4B2C-BDE6-C24A840B4ABC}&Status=US&Action=> Go Links >>

PCM Type*

Delay for first restart (1/8 sec ticks)

Delay between restarts (1/8 sec ticks)

Inhibit restarts at PRI initialization

Enable status poll

Call Routing Information

Inbound Calls

Significant Digits*

Calling Search Space

AAR Calling Search Space

Prefix DN

Outbound Calls

Calling Line ID Presentation*

Calling Party Selection*

Called party IE number type unknown*

Calling party IE number type unknown*

Called Numbering Plan*

Calling Numbering Plan*

Number of digits to strip*

Caller ID DN

SMDI Base Port*

PRI Protocol Type Specific Information

Display IE Delivery

Redirecting Number IE Delivery - Outbound

Redirecting Number IE Delivery - Inbound

Send Extra Leading Character In DisplayIE***

Setup non-ISDN Progress Indicator IE Enable****

Reset succeeded.

Local intranet



Cisco CallManager 4.0 Administration - Gateway Configuration - Microsoft Internet Explorer

File Edit View Favorites Tools Help

Address <http://cm-klngon/CCMAdmin/gatewayconfig.asp?pkid={DF71136E-4975-4B2C-BDE6-C24A840B4ABC}&Status=US&Action=>

MCDN Channel Number Extension Bit Set to Zero**

Send Calling Name In Facility IE

Interface Identifier Present**

Interface Identifier Value**

Connected Line ID Presentation (QSIG Inbound Call)*

Connected PBX Model

Product Specific Configuration

Clock Reference*

TX-Level CSU*

FDL Channel*

Framing*

Audio Signal Adjustment into IP Network*

Audio Signal Adjustment from IP Network*

Yellow Alarm*

Zero Suppression*

Digit On Duration(50-500ms)*

Interdigit Duration(50-500msec)*

SNMP Community String

Disable SNMP Set operations*

Debug Port Enable*

Hold Tone Silence Duration*

Port Used for Voice Calls*

Port Used for Modem Calls*

Port Used for Fax Calls*

Fax and Modem Parameters

Fax Relay Enable*

Fax Error Correction Mode Override*

Maximum Fax Rate*

Reset succeeded.

Local intranet



Cisco CallManager 4.0 Administration - Gateway Configuration - Microsoft Internet Explorer

File Edit View Favorites Tools Help

Address <http://cm-klington/CCMAdmin/gatewayconfig.asp?pkid={DF71136E-4975-4B2C-BDE6-C24A840B4ABC}&Status=US&Action=>

Maximum Fax Rate*	14400bps
Fax Payload Size*	20
Non Standard Facilities Country Code*	65535
Non Standard Facilities Vendor Code*	65535
Fax/Modem Packet Redundancy*	<input type="checkbox"/>
NSE Type*	Non-IOS Gateways

Playout Delay Parameters

Initial Playout Delay*	40
Minimum Playout Delay*	20
Maximum Playout Delay*	150

Echo Canceller Configuration

Echo TailLength (ms)*	32 ms
Minimum ERL (db)*	6 db

* indicates required item
** applicable to DMS-100 protocol only
*** applicable to DMS-100 protocol and DMS-250 protocol only
**** may be required to force ringback from some PBXs

[Back to Find/List Gateways](#)

Reset succeeded. Local intranet



Enbloc Route Pattern Configuration

Cisco CallManager 4.0 Administration - Route Pattern/Hunt Pilot Configuration - Microsoft Internet Explorer

File Edit View Favorites Tools Help

Back Forward Stop Home Search Favorites Media Print

Address http://cm-klngon/CCMAdmin/routepatternconfig.asp?pkid={89F5482D-22A8-4FEE-A402-C2E89728F18D} Go Links

Route Pattern/Hunt Pilot: 5XXX

Status: Ready
Note: Any update to this Route Pattern or Hunt Pilot automatically resets the associated gateway or Route/Hunt List

Copy Update Delete

Pattern Definition

Route Pattern/Hunt Pilot*	5XXX	
Partition	< None >	
Description		
Numbering Plan*	North American Numbering Plan	
Route Filter	< None >	
MLPP Precedence	Default	
Gateway or Route/Hunt List*	S0/DS1-0@SDA0001C9D93A98 (Edit)	
Route Option	<input checked="" type="radio"/> Route this pattern <input type="radio"/> Block this pattern — Not Selected —	
<input checked="" type="checkbox"/> Provide Outside Dial Tone	<input type="checkbox"/> Allow Overlap Sending	<input type="checkbox"/> Urgent Priority

Calling Party Transformations

Use Calling Party's External Phone Number Mask

Calling Party Transform Mask	
Prefix Digits (Outgoing Calls)	
Calling Line ID Presentation	Default
Calling Name Presentation	Default

Connected Party Transformations

Connected Line ID Presentation	Default
Connected Name Presentation	Default

Called Party Transformations

Discard Digits	< None >
Called Party Transform Mask	
Prefix Digits (Outgoing Calls)	

ISDN Network-Specific Facilities Information Element

Carrier Identification Code		
Network Service Protocol	— Not Selected —	
Network Service	Service Parameter Name	Service Parameter Value
— Not Selected —	< Not Exist >	

Done Local intranet



Translation Pattern for Incoming PSTN Calls

Cisco CallManager 4.0 Administration - Translation Pattern Configuration - Microsoft Internet Explorer

Address: http://cm-klngon/CCMAdmin/translationconfig.asp?pkid={A3066907-2F1B-4A87-B787-F4C7FB5B1D61}

Translation Pattern Configuration

[Add a New Translation Pattern](#)
[Back to Find/List Translation Patterns](#)

Translation Pattern: 527.XXXX
Status: Ready

Pattern Definition

Translation Pattern	<input type="text" value="527.XXXX"/>
Partition	<input type="text" value="Incoming Trunk"/>
Description	<input type="text"/>
Numbering Plan*	<input type="text" value="North American Numbering Plan"/>
Route Filter	<input type="text" value="< None >"/>
Calling Search Space	<input type="text" value="Phones"/>
MLPP Precedence	<input type="text" value="Default"/>
Route Option	<input checked="" type="radio"/> Route this pattern <input type="radio"/> Block this pattern <input type="text" value="— Not Selected —"/>

Provide Outside Dial Tone Urgent Priority

Calling Party Transformations

Use Calling Party's External Phone Number Mask

Calling Party Transform Mask	<input type="text"/>
Prefix Digits (Outgoing Calls)	<input type="text"/>
Calling Line ID Presentation	<input type="text" value="Default"/>
Calling Name Presentation	<input type="text" value="Default"/>

Connected Party Transformations

Connected Line ID Presentation	<input type="text" value="Default"/>
Connected Name Presentation	<input type="text" value="Default"/>

Called Party Transformations

Discard Digits	<input type="text" value="PreDot"/>
Called Party Transform Mask	<input type="text"/>
Prefix Digits (Outgoing Calls)	<input type="text"/>

* indicates required item.

Done Local intranet



PSTN Route Pattern Configuration

Cisco CallManager 4.0 Administration - Route Pattern/Hunt Pilot Configuration - Microsoft Internet Explorer

Address: http://cm-klinton/CCMAdmin/routepatternconfig.asp?pkid={D711DDCC-3043-40B9-8FC9-9B9B101B6FC0}

Route Pattern/Hunt Pilot: 9.650XXXXXXX

Status: Ready
Note: Any update to this Route Pattern or Hunt Pilot automatically resets the associated gateway or Route/Hunt List

Copy Update Delete

Pattern Definition

Route Pattern/Hunt Pilot* 9.650XXXXXXX

Partition < None >

Description

Numbering Plan* North American Numbering Plan

Route Filter < None >

MLPP Precedence Default

Gateway or Route/Hunt List* S0/DS1-0@SDA0001C9D93A98 (Edit)

Route Option

Route this pattern

Block this pattern — Not Selected —

Provide Outside Dial Tone Allow Overlap Sending Urgent Priority

Calling Party Transformations

Use Calling Party's External Phone Number Mask

Calling Party Transform Mask

Prefix Digits (Outgoing Calls) 527

Calling Line ID Presentation Default

Calling Name Presentation Default

Connected Party Transformations

Connected Line ID Presentation Default

Connected Name Presentation Default

Called Party Transformations

Discard Digits PreDot

Called Party Transform Mask

Prefix Digits (Outgoing Calls)

ISDN Network-Specific Facilities Information Element

Carrier Identification Code

Network Service Protocol — Not Selected —

Network Service Service Parameter Name Service Parameter Value

— Not Selected — < Not Exist >

Done Local intranet



7960 IP Phone Configuration

Cisco CallManager 4.0 Administration - Phone Configuration - Microsoft Internet Explorer

Address: <http://cm-klngon/CCMAdmin/phoneconfig.asp?pkid={23EE0A35-0B85-42D6-8B13-18D674D3F2CE}>

Phone Configuration

[Add a new phone](#)
[Add/Update Speed Dials](#)
[Subscribe/Unsubscribe Services](#)
[Dependency Records](#)
[Back to Find/List Phones](#)

Directory Numbers

Base Phone

- 7718 Line 1 - 4000 in
7719 Phones
- 7718 Line 2 - Add new DN
7719

Phone: SEP000B5FD22FE8 (Auto 4000)
Registration: Registered with Cisco CallManager 172.20.32.254
IP Address: 172.20.32.102
Status: Ready

Phone Configuration (Model = Cisco 7960)

Device Information

MAC Address*	<input type="text" value="000B5FD22FE8"/>
Description	<input type="text" value="Auto 4000"/>
Owner User ID	<input type="text"/> (Select User ID)
Device Pool*	<input type="text" value="Default"/> (View details)
Calling Search Space	<input type="text" value="< None >"/>
AAR Calling Search Space	<input type="text" value="< None >"/>
Media Resource Group List	<input type="text" value="< None >"/>
User Hold Audio Source	<input type="text" value="< None >"/>
Network Hold Audio Source	<input type="text" value="< None >"/>
Location	<input type="text" value="< None >"/>
User Locale	<input type="text" value="< None >"/>
Network Locale	<input type="text" value="< None >"/>
Device Security Mode	<input type="text" value="Use System Default"/>
Built In Bridge	<input type="text" value="Default"/>
Privacy	<input type="text" value="Default"/>

Phone Button Template Information

Phone Button Template*	<input type="text" value="Standard 7960"/> (View button list)
------------------------	---

Softkey Template Information

Softkey Template	<input type="text" value="< None >"/>
------------------	---

Expansion Module Information

Module 1	<input type="text" value="< None >"/>
Module 2	<input type="text" value="< None >"/>

Local intranet



Cisco CallManager 4.0 Administration - Phone Configuration - Microsoft Internet Explorer

Address: http://cm-klngon/CCMAdmin/phoneconfig.asp?pkid={23EE0A35-0B85-42D6-8B13-18D674D3F2CE}

Firmware Load Information (leave blank to use default)

Phone Load Name:

Module 1 Load Name: (Module 1 selection required)

Module 2 Load Name: (Module 2 selection required)

Cisco IP Phone - External Data Locations (leave blank to use default)

Information:

Directory:

Messages:

Services:

Authentication Server:

Proxy Server:

Idle:

Idle Timer (seconds):

Extension Mobility (Device Profile) Information

Enable Extension Mobility Feature

Log Out Profile:

Log In User ID:

Log In Time:

Log Out Time:

Multilevel Precedence and Preemption (MLPP) Information

MLPP Domain: (e.g., "0000FF")

MLPP Indication:

MLPP Preemption:

Product Specific Configuration

Disable Speakerphone:

Disable Speakerphone and Headset:

Forwarding Delay*:

PC Port*:

Settings Access*:

Gratuitous ARP*:

PC Voice VLAN Access*:



Cisco CallManager 4.0 Administration - Directory Number Configuration - Microsoft Internet Explorer

File Edit View Favorites Tools Help

Address <http://cm-klngon/CCMAdmin/directorynumber.asp?NumPlanMapID={FDF4C8AE-583C-4480-9C58-36FC82BAA685}>

Directory Number Configuration

[Configure Device \(SEP000B5FD22FE8\)](#)
[Dependency Records](#)

Associated With
SEP000B5FD22FE8
7960 (Line 1)

Directory Number: 4000 (Phones)
Status: Ready
Note: Any update to this Directory Number automatically resets the associated devices

Update Remove from Device Reset Devices

Directory Number
Directory Number* 4000
Partition Phones

Directory Number Settings
Voice Mail Profile <None> (Choose <None> to use default)
Calling Search Space Phones
AAR Group <None>
User Hold Audio Source <None>
Network Hold Audio Source <None>
Auto Answer Auto Answer Off

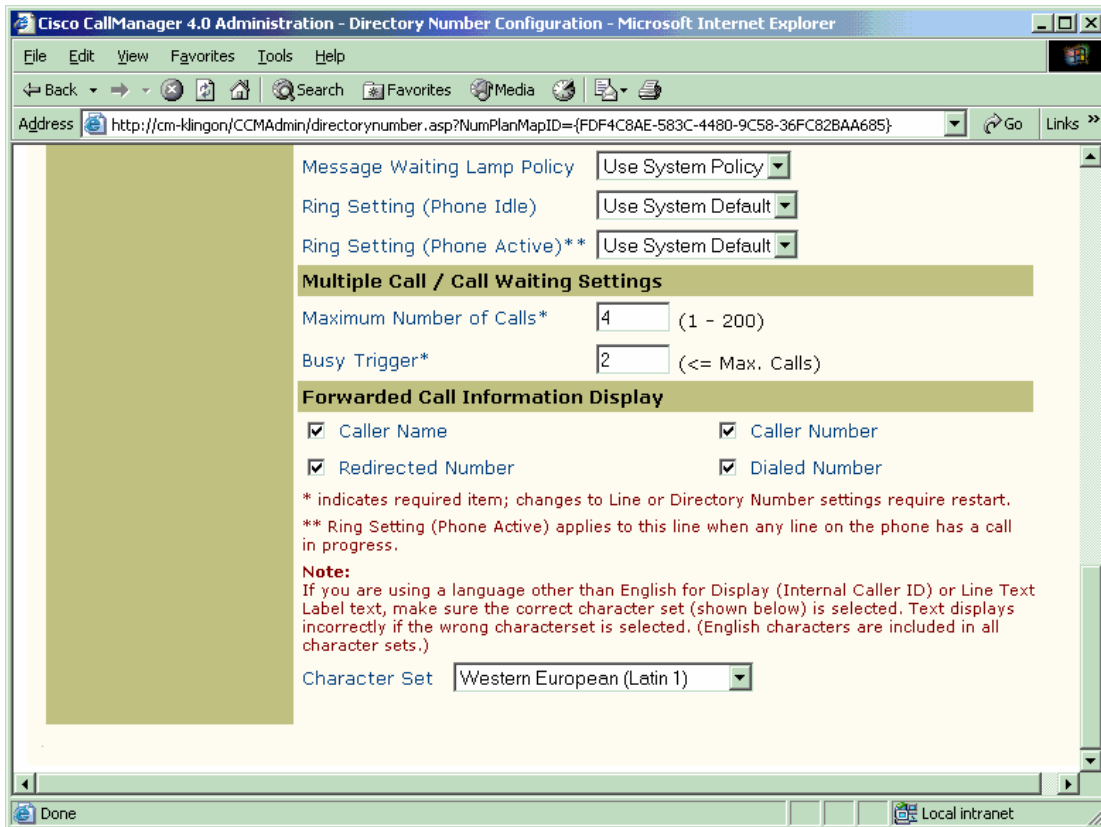
Call Forward and Pickup Settings

	Voice Mail Destination	Calling Search Space
Forward All	<input type="checkbox"/>	<None>
Forward Busy	<input type="checkbox"/>	<None>
Forward No Answer	<input type="checkbox"/>	<None>
No Answer Ring Duration	(seconds)	
Call Pickup Group	<None>	

MLPP Alternate Party Settings
Target (Destination)
Calling Search Space <None>
No Answer Ring Duration (seconds)

Line Settings for this Device
Display (Internal Caller ID) JOHN DOE
Line Text Label
External Phone Number Mask

Done Local intranet



Important Information

THE SPECIFICATIONS AND INFORMATION REGARDING THE PRODUCTS IN THIS MANUAL ARE SUBJECT TO CHANGE WITHOUT NOTICE. ALL STATEMENTS, INFORMATION, AND RECOMMENDATIONS IN THIS MANUAL ARE BELIEVED TO BE ACCURATE BUT ARE PRESENTED WITHOUT WARRANTY OF ANY KIND, EXPRESS OR IMPLIED. USERS MUST TAKE FULL RESPONSIBILITY FOR THEIR APPLICATION OF ANY PRODUCTS.

IN NO EVENT SHALL CISCO OR ITS SUPPLIERS BE LIABLE FOR ANY INDIRECT, SPECIAL, CONSEQUENTIAL, OR INCIDENTAL DAMAGES, INCLUDING, WITHOUT LIMITATION, LOST PROFITS OR LOSS OR DAMAGE TO DATA ARISING OUT OF THE USE OR INABILITY TO USE THIS MANUAL, EVEN IF CISCO OR ITS SUPPLIERS HAVE BEEN ADVISED OF THE POSSIBILITY OF SUCH DAMAGES.



Corporate Headquarters

Cisco Systems, Inc.
170 West Tasman Drive
San Jose, CA 95134-1706
USA
www.cisco.com
Tel: 408 526-4000
800 553-NETS (6387)
Fax: 408 526-4100

European Headquarters

Cisco Systems International
BV
Haarlerbergpark
Haarlerbergweg 13-19
1101 CH Amsterdam
The Netherlands
www-europe.cisco.com
Tel: 31 0 20 357 1000
Fax: 31 0 20 357 1100

Americas Headquarters

Cisco Systems, Inc.
170 West Tasman Drive
San Jose, CA 95134-1706
USA
www.cisco.com
Tel: 408 526-7660
Fax: 408 527-0883

Asia Pacific Headquarters

Cisco Systems, Inc.
Capital Tower
168 Robinson Road
#22-01 to #29-01
Singapore 068912
www.cisco.com
Tel: +65 317 7777
Fax: +65 317 7799

Cisco Systems has more than 200 offices in the following countries and regions. Addresses, phone numbers, and fax numbers are listed on **the Cisco Web site at www.cisco.com/go/offices.**

Argentina • Australia • Austria • Belgium • Brazil • Bulgaria • Canada • Chile • China PRC • Colombia • Costa Rica • Croatia • Czech Republic • Denmark • Dubai, UAE • Finland • France • Germany • Greece • Hong Kong SAR • Hungary • India • Indonesia • Ireland • Israel • Italy • Japan • Korea • Luxembourg • Malaysia • Mexico • The Netherlands • New Zealand • Norway • Peru • Philippines • Poland • Portugal • Puerto Rico • Romania • Russia • Saudi Arabia • Scotland • Singapore • Slovakia • Slovenia • South Africa • Spain • Sweden • Switzerland • Taiwan • Thailand • Turkey • Ukraine • United Kingdom • United States • Venezuela • Vietnam • Zimbabwe

Copyright 2003 Cisco Systems, Inc. All rights reserved. Cisco, Cisco Systems, and the Cisco Systems logo are registered trademarks or trademarks of Cisco Systems, Inc. and/or its affiliates in the U.S. and certain other countries. All other trademarks mentioned in this document or Web site are the property of their respective owners. The use of the word partner does not imply a partnership relationship between Cisco and any other company. (0301R)